

1. Loading Disinfectant

Warning! Avoid possible chemical burns. Always wear proper eye protection, and protective, chemical-resistant clothing and gloves when handling disinfectant.

Warning! Avoid possible slip injuries. Clean up any spills immediately.

1. Locate the reservoir to disinfectant filter connection and disconnect them at the red connection (figure 1).
2. Fully remove and replace the old disinfectant filter (figure 1).
3. Locate the transfer pump tubing segment with the red male end and the female cream-colored end (figure 2).
 - a. Connect the red male end to the red female end of the reservoir assembly.

NOTE: On earlier DSD models, the female end of the reservoir tubing may be cream-colored (figure 3).

- b. Connect the cream-colored female end of the transfer pump tubing segment to the cream-colored male end of the 3-way valve located on the transfer pump (figure 3).
4. Locate the transfer pump tubing segment with the red female end and the long rigid end w/rubber seal (figure 2).
 - a. Connect the red female end to the male red colored end of the disinfectant filter.

NOTE: On earlier models, the male end of the disinfectant filter may be cream-colored (figure 3).

- b. Place the rigid end with rubber seal of the transfer pump tubing into a full disinfectant container (figure 3).
5. Rotate the 3-way valve handle of the transfer pump until it points out from the sidewall of the DSD cabinet, which also indicates the direction that fluid will flow which in this case is into the reservoir (figure 3).
 6. Locate the manual pump switch on the upper right side of the cabinet wall labeled Chemical Loading Switch. Press and hold switch until all disinfectant has been pumped into the reservoir and repeat with a new disinfectant container until four (4) gallons (15.14 liters) has been pumped into the reservoir (figure 3).
 7. Rotate the 3-way valve handle back and return all tubing connections back to their original positions (figure 3).
 8. Perform "Setup 11" to clear the cycle count, and "Setup 16" to verify the cycle count resets to zero.

Disinfectant Filter Connection to Reservoir

Disinfectant Filter

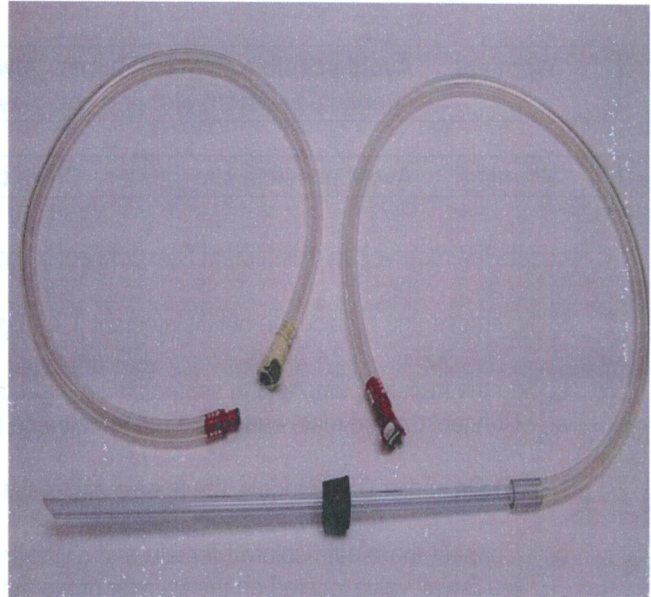
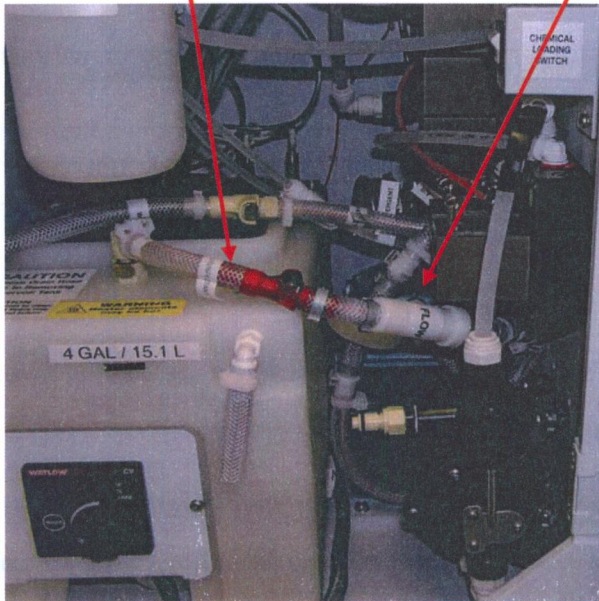
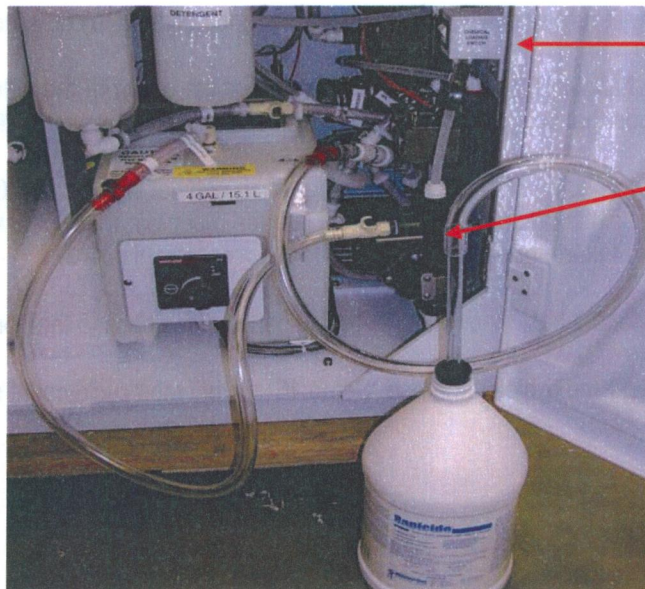


Figure 1. Reservoir & Disinfectant Filter Connection

Figure 2. Transfer Pump Tubing Kit



Chemical Loading Switch

3-way valve handle of transfer pump in out or fill reservoir position

Figure 3. Loading disinfectant into DSD reservoir



2. Discarding Disinfectant

Caution! When local regulations prohibit the dumping of disinfectant into the sanitary sewer system, then the internal chemical transfer pump must be used.

Caution! To avoid reprocessor damage, never add neutralizer to the disinfectant while it is in the reprocessor. Neutralizer can only be added to the LCG after it has been pumped out to the external containers

Warning! Avoid possible chemical burns. Always wear proper eye protection and protective, chemical-resistant gloves and clothing when handling disinfectant.

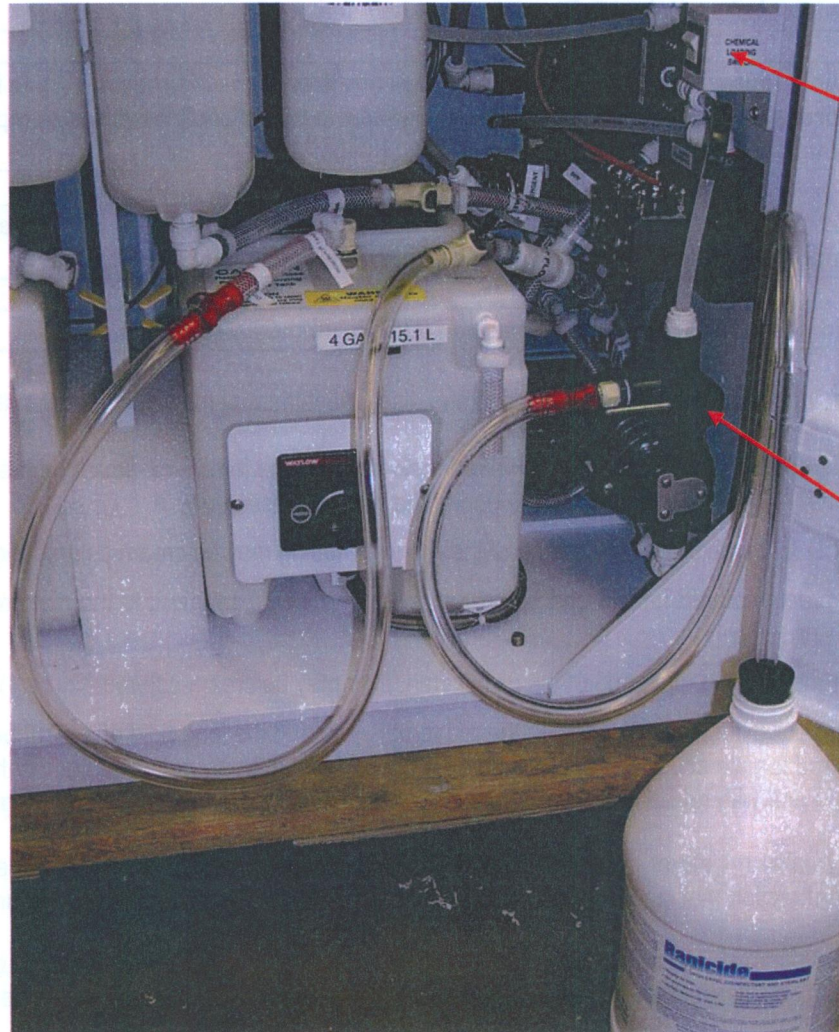
Warning! Avoid possible slip injuries. Clean up any spills immediately.

1. Locate the reservoir to disinfectant filter connection and disconnect them at the red connection (figure 1).
2. Locate the transfer pump tubing segment with the red male end and the female cream-colored end (figure 2).
 - a. Connect the red male end to the red female end of the reservoir assembly.

NOTE: On earlier DSD models, the female end of the reservoir tubing may be cream-colored (figure 4).

 - b. Connect the cream-colored female end of the transfer pump tubing segment to the male red colored end of the disinfectant filter.

NOTE: On earlier models, the male end of the disinfectant filter may be cream-colored (figure 4).
3. Locate the transfer pump tubing segment with the red female end and the long rigid end w/rubber seal (figure 2).
 - a. Connect the red female end to the cream colored male end of the 3-way valve located on the pump (figure 4).
 - b. Place the rigid end with rubber seal of the transfer pump tubing into an empty container (figure 4).
4. Rotate the 3-way valve handle of the transfer pump until it points out from the sidewall of the DSD cabinet, which also indicates the direction that fluid will flow which in this case is into the empty container (figure 4).
5. Locate the manual pump switch on the upper right side of the cabinet wall labeled Chemical Loading Switch. Press and hold switch until all disinfectant has been pumped out of the reservoir and into the container (figure 4).
6. Rotate the 3-way valve handle back and return all tubing connections back to their original positions (figure 4).
7. Perform "Setup 11" to clear the cycle count, and "Setup 16" to verify the cycle count resets to zero.
8. When applicable, add neutralizer to the container of used disinfectant as per manufacturer's guidelines, and properly dispose of disinfectant according to all applicable local regulations.



Chemical Loading
Switch

3-way valve handle of
transfer pump in out or
fill empty container
position

Figure 4. Discarding used disinfectant into empty container